

Azure API Center

An Introductory Session



Integration.team

Connecting anything, anytime, anywhere



Hannelore Peeters

Azure Cloud Integration Engineer @ Integration.team

28 years old

- Microsoft BizTalk
- Azure
 - API Management
 - Azure Functions
 - Logic Apps
 - ServiceBus

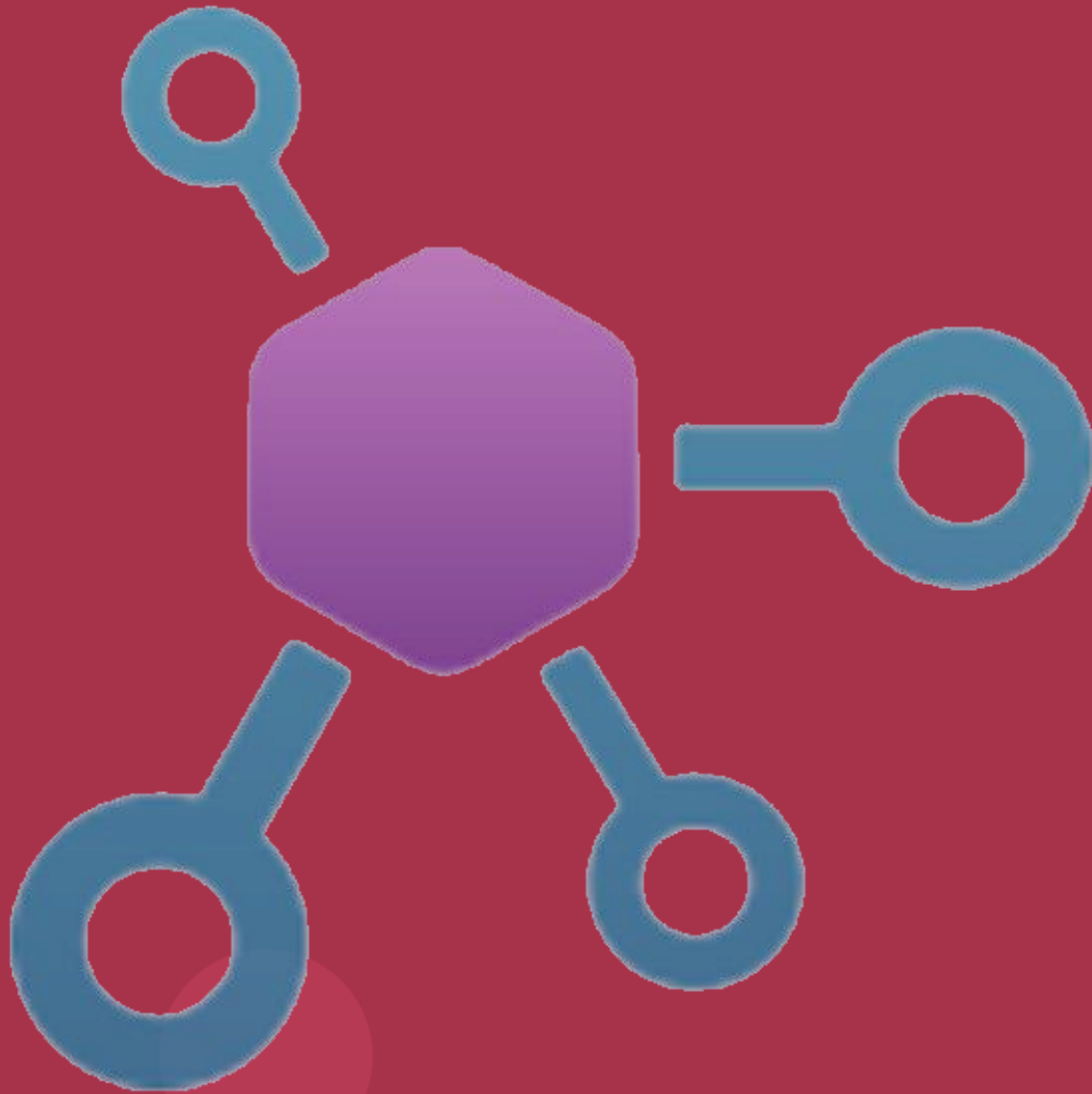


Integration.team

Connecting anything, anytime, anywhere

Agenda

- What is API Center?
- API Center vs API Management
- Why use API Center?
 - API Center Portal
 - Custom Metadata
 - API Analysis
- Demo



API Center

What is API Center?

- Azure service
 - public preview
- Central Hub
 - API Inventory
- Management tool



API Center vs API Management

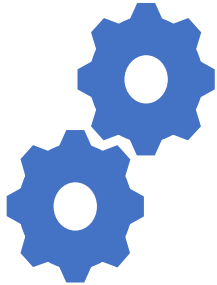
API Center

- Managing
- Discovering
- Reusing

API Management

- Creating
- Publishing
- Securing
- Managing

Why use API Center?



Organizational Inventory

Track all APIs
Reusability
Transparency



API Discovery

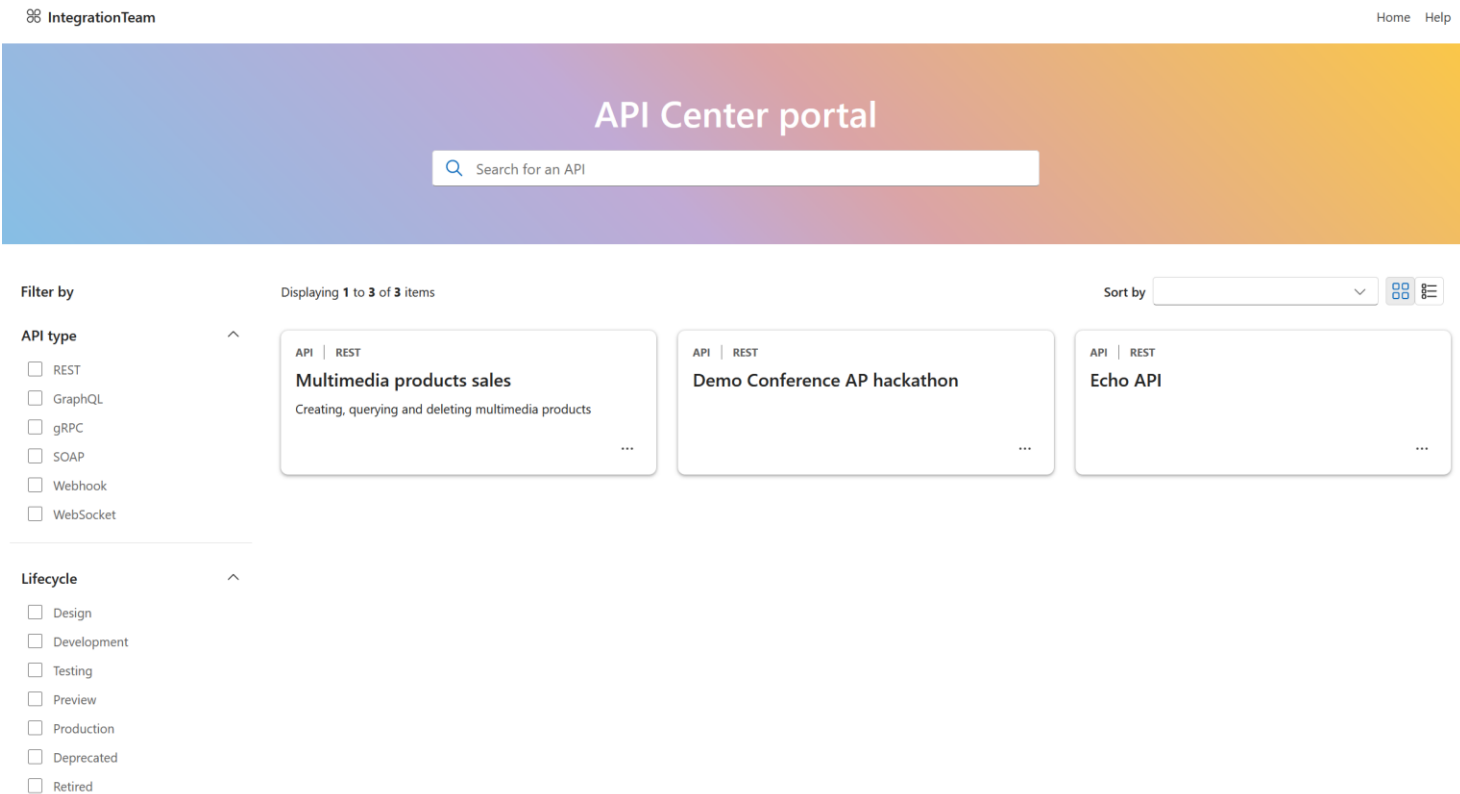
API Center Portal



API Governance

Custom metadata
API Analysis

API Center Portal



The screenshot shows the API Center Portal interface. At the top left, it says "IntegrationTeam" and at the top right, "Home Help". The main header is a gradient bar with "API Center portal" and a search bar containing "Search for an API". Below the header, there are filter sections on the left: "Filter by" with "API type" (REST, GraphQL, gRPC, SOAP, Webhook, WebSocket) and "Lifecycle" (Design, Development, Testing, Preview, Production, Deprecated, Retired). The main content area shows "Displaying 1 to 3 of 3 items" and "Sort by" with a dropdown and view options. Three API cards are displayed: "Multimedia products sales" (REST), "Demo Conference AP hackathon" (REST), and "Echo API" (REST).

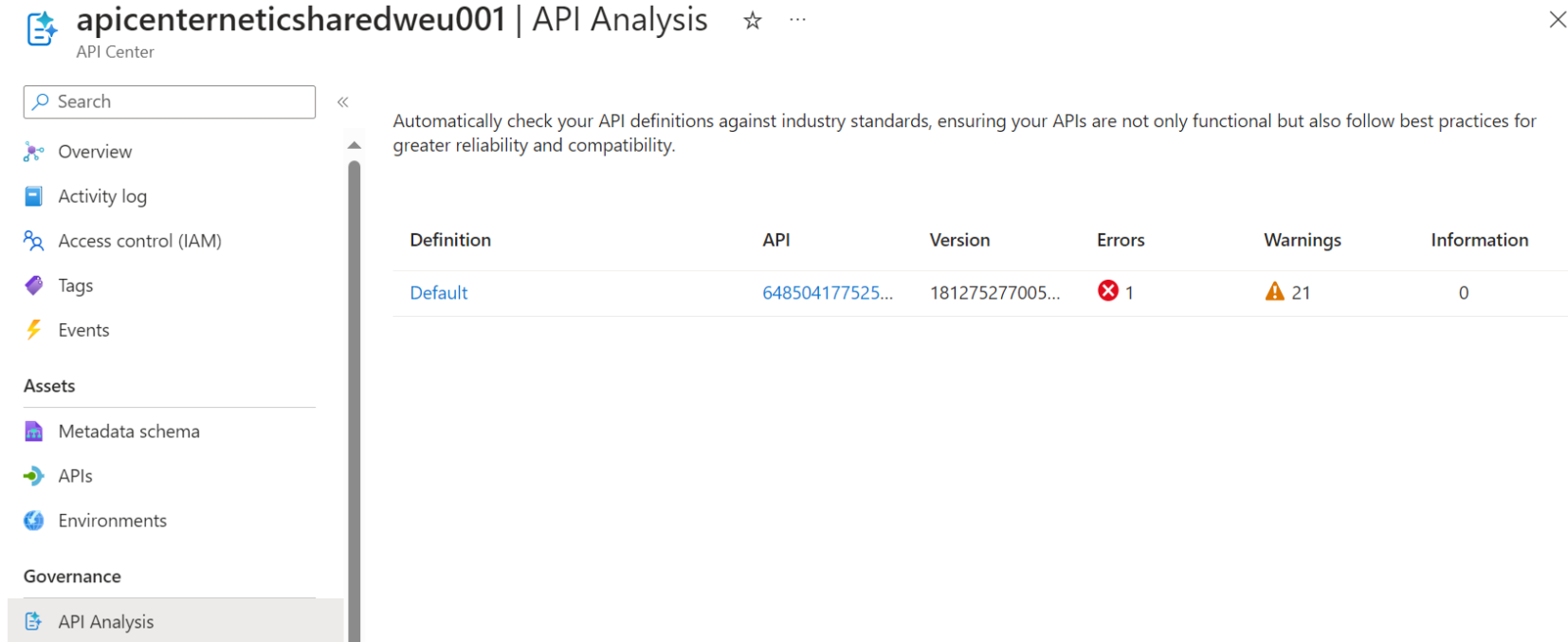
- Permission only on Portal
- Lifecycle tracking
 - Register APIs during development
- Different sources
 - Not only APIM
 - Swagger, OpenAPI

Custom metadata

- Metadata out-of-the-box
 - API version, lifecycle
- Search & Filter
- Supported types
 - array, boolean, number, object, predefined choices, and string
- Schema
 - json, yaml

API Analysis

- Standardization
 - Guidelines
 - Best Practices
- Consistency
- API Analysis Report
 - Function App
 - Spectral linting



apicenterneticssharedweu001 | API Analysis ☆ ...

API Center

Search

Overview
Activity log
Access control (IAM)
Tags
Events

Assets

Metadata schema
APIs
Environments

Governance

API Analysis

Automatically check your API definitions against industry standards, ensuring your APIs are not only functional but also follow best practices for greater reliability and compatibility.

Definition	API	Version	Errors	Warnings	Information
Default	648504177525...	181275277005...	✖ 1	⚠ 21	0

The background is a solid dark blue color. It features several large, overlapping, organic shapes in a lighter shade of blue. These shapes are reminiscent of liquid droplets or flowing lines, creating a sense of movement and depth. The shapes are positioned primarily on the left and center of the frame, with some extending towards the right.

Demo